

TCG in Hong Kong



Pre-Construction | Fit Out | A&A | Building Services | Façade



Content

- The TCG difference
- TCG in Hong Kong
- Our services
- Our sectors
- Our vision, brand and strategic plan





For nearly three decades, TCG has been providing construction solutions to some of the world's most successful and enduring businesses, cities and institutions.

Our customers trust us to deliver – and our repeat business and numerous industry accolades prove it.

Yet today's fast-paced world demands more than a safe pair of hands. Delivering the places of tomorrow requires the ability to think big, collaborate widely and meaningfully, and build in real capacity for change. For this reason, everything we do at TCG – from our work with our customers to our relationships with our own people – is focused on delivering smarter and more resilient places of tomorrow.



The TCG difference

A preconstruction process that enhances delivery

You should feel certainty of successful delivery from the moment you start a building project. TCG engages early and effectively with project teams, assessing viability, inputting on design, and influencing technology. This highly collaborative and consultative approach paves the way for a smooth and efficient design and delivery process and successful mission activation. Most importantly, it leads to an uncompromised outcome.

Some of the safest sites in the industry

With TCG, you can rest easy knowing the risk of accidents on site is as low as possible. Our record on health and safety is among the best in the world, both inside and outside our industry. The reason for our success is rooted in our commitment to not just reducing incidents but to making safe behaviours an intrinsic part of our culture. Through innovation, benchmarking and constant improvement, we work every day toward our goal of providing safe spaces for people to work, communicate and thrive.

A customer journey built around your business

We make it our business to know your business. Our sector-centred, customer-focused approach to construction means we aim to understand what's important to you, and we work with you to ensure your needs are met throughout the delivery process. We only employ people who share our commitment to speaking frankly and always caring for our customers, and we focus as much on delivery as we do on the relationship dynamic that helps us get there.

Intelligent buildings that improve operations

With TCG, you get a construction team that puts technology at the heart of everything it does. Our unrivalled building technology and engineering experts integrate cutting-edge construction solutions and create intelligent data-driven buildings that save costs and enable operations. In addition, we provide you with activation assurance—the peace of mind that comes from knowing your building technology will be agile, functional and futureproofed from day one.



TCG in 60 seconds

- Three office:
Hong Kong, Macau and Taiwan
 - Five service lines:
Pre-construction, A&A, Fit out, Building Services and Facade
 - Sectors:
Offices; Technology, Science & Health; Retail; Hospitality, Leisure & Living; Government, Public Sector & Education
-

TCG in Hong Kong

TCG Hong Kong at a glance

- Established in 2000
- Employing over 101 people
- Delivered over 20 million sq ft of projects
- ISO 9001, 140001 and 45001 certified
- Registered General Building Contractor
- Registered Electrical Contractor
- HKD700m projected turnover
- Five sectors: Offices; Technology, science and health; Retail; Hospitality, leisure & living; Government, public sector and education

In Hong Kong, we work with our local trades and imparted our specialist knowledge in this evolving, dynamic global city for over two decades.

In Hong Kong, we provide pre-construction, fit out, addition and alteration works, building services and facade across a range of sectors: offices, hospitality, leisure and living, retail, technology, science and health, and also government, public sector and education.

Our experience ranges from small office upgrades to multi-storey corporate headquarters; the rejuvenation of guestrooms to the upgrade of mixed-use commercial development schemes. Our work, whether in new or established environments, is often performed out of hours and in occupation to meet our customer's demands.

Our customers return to us time and again because of our focus on the end user. We make it our mission to understand your mission, and we aren't satisfied with our work until your organisation is actively engaged in yours.

Our skilled and specialised teams, are selected around you and your mission. We have the right experts for the job, and always put your needs and requirements first.



Our services



Fit out

From major commercial fit out to large-scale global retail rollout programmes, from aftercare works to ATM installations, we deliver environments which are vital to our customers' business operations and their evolving industry.

Fit out of new space

We create flexible, bespoke environments designed to stimulate the productivity and growth of your business, as well as places which will enthuse your staff, customers and guests. We have delivered new builds from shell through to finish. We also work around you, deciding on highly collaborative and dynamic delivery methods to ensure the well-being and comfort of you and your people - not to mention your neighbours and tenants.

Fit out of existing space

We have an established and well-regarded track record of transforming tired and unproductive real estate into vibrant and inviting spaces. Our portfolio ranges from the renovation of a single room to entire buildings across a range of sectors. We specialise in 'change of use' projects, which can include full plant and infrastructure upgrades and the installation of the latest technology. We also have considerable experience in restoring listed and heritage properties, marrying the old with the new while seamlessly integrating services.

Fit out in occupation

Changes in business objectives, structure and vision can all impact on an organisation's accommodation requirements. Our customers often need us to rearrange spaces of various sizes to meet these changing requirements. We work in occupied buildings and identify innovative ways to allow our customers to continue their daily activities, saving them both time and money. We have also completed refurbishment projects in live environments while ensuring minimal disruption; we work discreetly around your staff, clients and visitors, and maintain the highest standards of health and safety.

Moving on, moving out

Property agents and occupiers need us to help them to swiftly decommission space and reinstate it for letting. Developers also require our services to prepare a building to market, which often involves the creation of bespoke marketing suites, mockups and showrooms.



Construction

We have a strong track record of construction and engineering projects in Hong Kong, from single-storey construction to large-scale schemes including mixed-use development, multi-storey tenancy as well as iconic retail and hospitality destinations.

We are experts in delivering dynamic solutions to an exceptional quality and pride ourselves on not just being builders but in sharing our customer's vision: understanding, planning and being flexible to deliver a successful project.

With our roots in fit out, it is not surprising that TCG is trusted with some of the most complex refurbishments, restorations and retrofit projects as well as traditional new build construction projects.

We thrive on tight programmes and logistical complexities. We understand that delivering large projects is not just about square footage or scale; it's also about being entrusted with a big responsibility to make big ideas come to life.





Refurbishment

When it comes to refurbishing or alteration and addition works, TCG is one of the most respected and active specialist contractors. We have delivered numerous complex refurbishments, often in occupied buildings. We have a strong track record in transforming tired and unproductive real estate into vibrant and inviting spaces, always meeting both the developer and tenants' needs.

Restoration

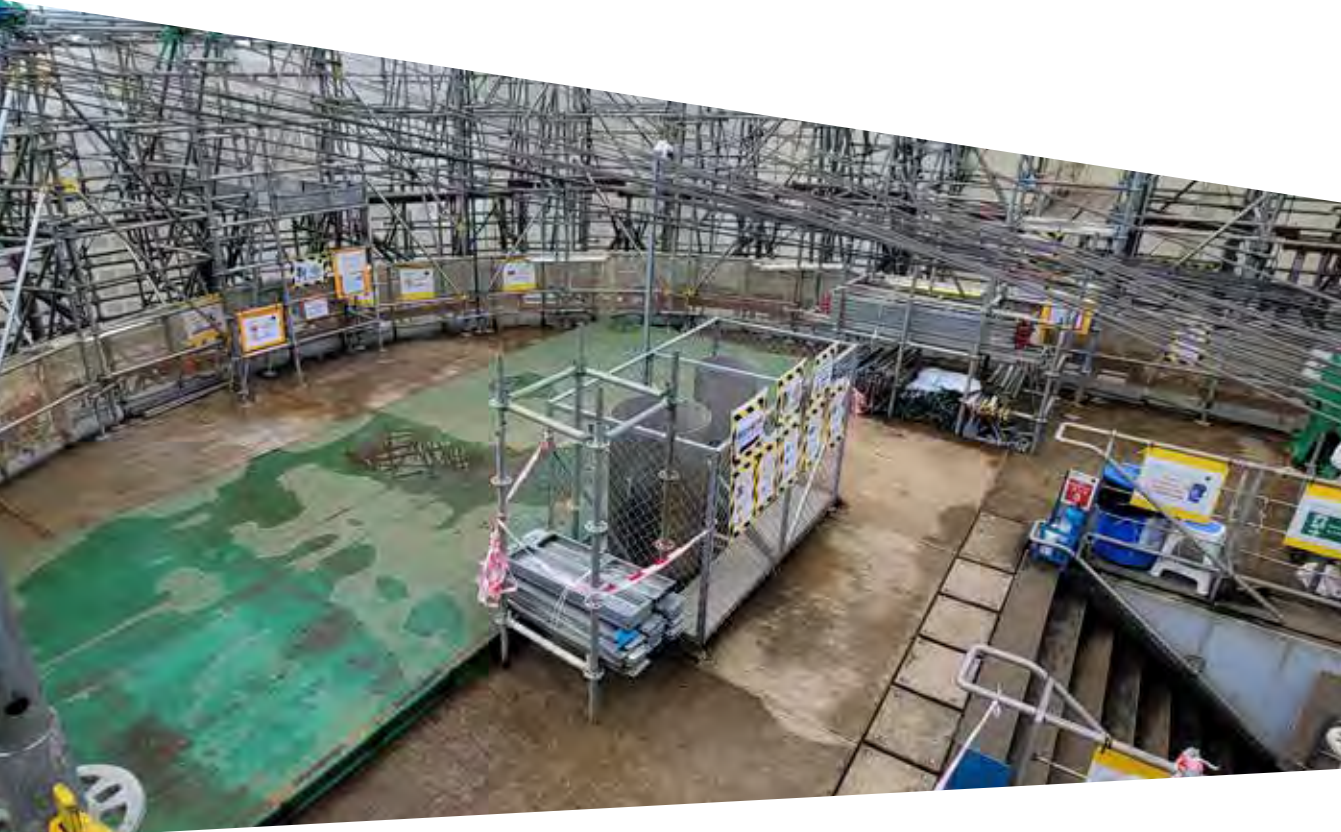
With extensive experience working with conservation bodies and funding organisations, we are proud to have been trusted to restore many prestigious and listed builds that boast rich histories. From straightforward to complex structural alterations, our expertise within listed and heritage environments means that we are able to craft intelligent and dynamic solutions to meet the needs of each individual customer.

Retrofit

We understand that a sustainable approach to development, retrofitting and reusing as much of the fabric of the original building wherever possible, is good for both our customer's bottom line and the environment. We have an enviable track record in bringing older stock up to the latest environmental standards, and have delivered numerous retrofit projects throughout Malaysia.

Façade

Sometimes buildings just need a refresh instead of a rebuild. Our team of experts can take rundown buildings with complex external refurbishments, and transform them into modern, vibrant and smart spaces. This has allowed our customers to bring life to new buildings, and in effect, a brand new building back to the market. Reenergising façades can not only completely transform a building's fortunes, it can also significantly improve energy efficiency and whole-life costs.



Building Services

Great technology is no longer an afterthought. We believe all work environments are technology environments.

This means not only do we have the extensive, multi-disciplinary expertise and specialised skills to deliver highly-engineered environments, but we also have a dedicated technology solutions team for clients who want to challenge the traditional technology delivery model. Our engineering expertise reflects our commitment to smarter solutions for our customers.

Critical infrastructure

We understand that working and living in a technology-led world means the failure or disruption of certain services can result in major consequences for our customers. We have established an international track record for delivering critical engineering projects for our customers across the finance, media and technology, research and development, and education and healthcare sectors. Our market-leading position is maintained by our passion for solutions to support our customers' business drivers.

Our portfolio of projects includes the construction and upgrade of datacentres, laboratories, clean rooms and processing facilities as well as the renewal of critical infrastructure, such as boilers and chillers. We are also experts in delivering sustainable initiatives including solar devices and other energy-efficient solutions.

Technology solutions

Technology solutions at TCG is revolutionising the traditional technology delivery model, making our customers' work environments smarter and more resilient. We believe technology can no longer afford to be an add-on to the built environment—it must be integral to the fabric of the place. Our technology solutions team works at the intersection of technology, construction and business, creating buildable solutions from strategy and design through to delivery and operation.

Technical fit out

With the onset of global connectivity and the continual development of new technology, we recognise the demand for technical solutions are reaching new heights for businesses. We are the go-to contractor for highly-technical fit out requirements. We have extensive experience in future-proofing your business with the latest technology including state-of-the-art audio visual systems, virtual meeting installations such as telepresence and halo rooms, fibre optic installations, structured data cabling and converged IP networking.



Building Information Modelling (BIM)

TCG has recognised the importance and advantages of BIM, adopting many of its processes effectively on projects. BIM is a virtual construction process which allows a complete digital representation of a building's physical and functional characteristics to be created prior to physical construction.

We identify the real benefits for a project. Our processes help support earlier and better decision-making through the use of the model and its data. That same model and data can be used by all parties throughout the asset lifecycle from inception to operation, including clients, designers, subcontractors and operational personnel.

Testing and commissioning

TCG has been working with experienced specialists who provide independent commissioning management and associated services to all industries reliant on mechanical and electrical building services systems for business operations. We revolutionise the traditional technology delivery model, making our customers' environments smarter and more resilient. Our game-changing approach starts not with what we do, but with what we believe.

Our sectors



Offices

We know that offices are rarely just places to house people—we make sure your office is as resilient and agile as your business.

The office is a key part of your business infrastructure. It forms the backbone for sophisticated technology and operations. It plays a key role in attracting and retaining the best people. As such, it must be as resilient and agile as the business that occupies it.

TCG has a strong legacy of creating offices that touch every aspect of the modern workplace. From new headquarters, technology upgrades to the smaller moves and changes that keep companies competitive, we take our roles as enablers of business very seriously. We ask tough questions, challenge conventional methods and ultimately deliver offices that are more resilient to the future than their counterparts.

We care deeply about helping our customers meet their business goals—and our extensive track record and rate of repeat business proves it.

After decades working alongside developers, designers and end-users to build and fit out new office buildings, workplaces and refurbishments, we have an unrivalled portfolio and depth of expertise. We have delivered effective office environments for a range of local and international customers operating in a myriad of industries including finance, technology, media, pharmaceutical, retail and industrial. With each project, we had the opportunity to combine the highest quality finishes with a complex range of technical and engineering services installations.



Hang Seng 113

Built in 1996 and formerly a tired commercial building, Hang Seng 113 is a grade A commercial development located at 113-115 Argyle Street in Mong Kok. Acquired by Hang Seng Bank, TCG partnered with Hsin Chong Aster to deliver the full reinstatement for the 30-storey building, with a total gross floor area of 340,000 sq ft. The scope of works undertaken included site demolition across all floors, structural strengthening and upgrade, installation of building services systems including mechanical, electrical and plumbing services

Customer: Hsin Cheong Aster Building Services Limited

Location: Mong Kok

Area: 340,000 sq ft

Duration: 91 weeks

Completion date: February 2017



**Reinstating
a 30-storey
commercial
building in
Mong Kok**

Global banking company

The 32,000 sq ft office for TCG's longstanding customer was built to accommodate the bank's growing digital solutions team and accelerate its 'fintech' capabilities at a global scale. As the main contractor working alongside Arcadis, TCG's scope of works involved the main office fit out, installation of mechanical, electrical and data systems, along with engineering and technology integration across the entire floor. TCG also delivered 20 unique and high-specification meeting suites equipped with the latest audio visual technology as well as dedicated restrooms and breakout facilities.

Customer: Confidential

Location: Tai Kok Tsui

Area: 32,000 sq ft

Duration: 8 weeks

Completion date: December 2017



TCG's longstanding customer over the years

Arcadis Hong Kong

TCG was appointed by a leading design, engineering and consulting firm, Arcadis to provide fit out services for its office relocation in Kwun Tong, Hong Kong. The project saw TCG deliver the fit out of a 50,000 sq ft office space across three floors with an extensive scope to deliver for a new and collaborative workspace environment, including structural works for an internal feature staircase and associated mechanical, electrical and plumbing (MEP) works across all floors. The fit out was successfully completed in July 2018, following a project period of three months.

Customer: Arcadis Hong Kong Limited

Location: Kwun Tong

Area: 50,000 sq ft

Programme duration: 3 months

Completion date: July 2018

Delivered a vibrant and collaborative workspace for Arcadis' workforce



Global financial institution

Establishing robust relationship in 2005, this was TCG's ninth project appointment by the global financial institution. Appointed as the management contractor, TCG successfully delivered a 22,000 sq ft new office for the customer at Two ifc in Central. The scope of works involved the main contracting works and critical M&E engineering works to support the customer's trading operations.

The office relocation to a grade-A commercial complex demonstrated the customer's ambition for continued growth in the marketplace. The project was successfully handed over in September 2018, following a construction period of seven months.

Customer: Confidential

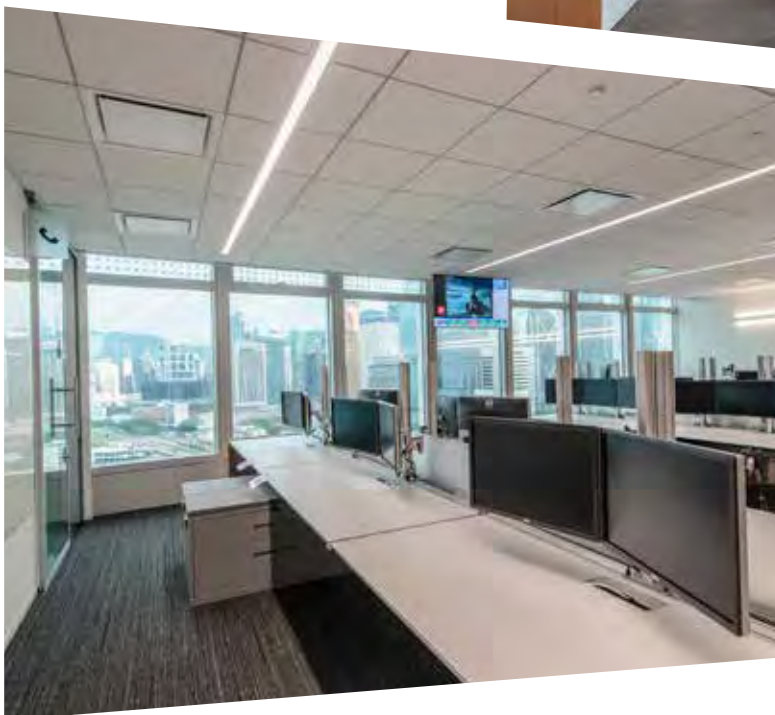
Location: Central

Area: 22,000 sq ft

Duration: 7 months

Completion date: September 2018

TCG's ninth project
appointment by the
repeat customer



American financial services company

TCG was appointed by the world's leading bank to deliver a high-end fit out and complex building services for its new headquarters in Hong Kong. Spanning 240,000 sq ft of office space across seven floors at a grade-A office building, the new office was built to house the bank's expanding workforce, and support its development plan.

Customer: Confidential
Location: Kowloon East
Area: 240,000 sq ft
Duration: 6 months
Completion date: October 2019

The complex scheme benefitted from the use of the latest technology including BIM and a construction app, and the close collaboration between TCG, stakeholders and the customer. It was completed over a construction period of six months.





The largest fit out project
in the history of TCG in
Hong Kong



International Bank Main Building

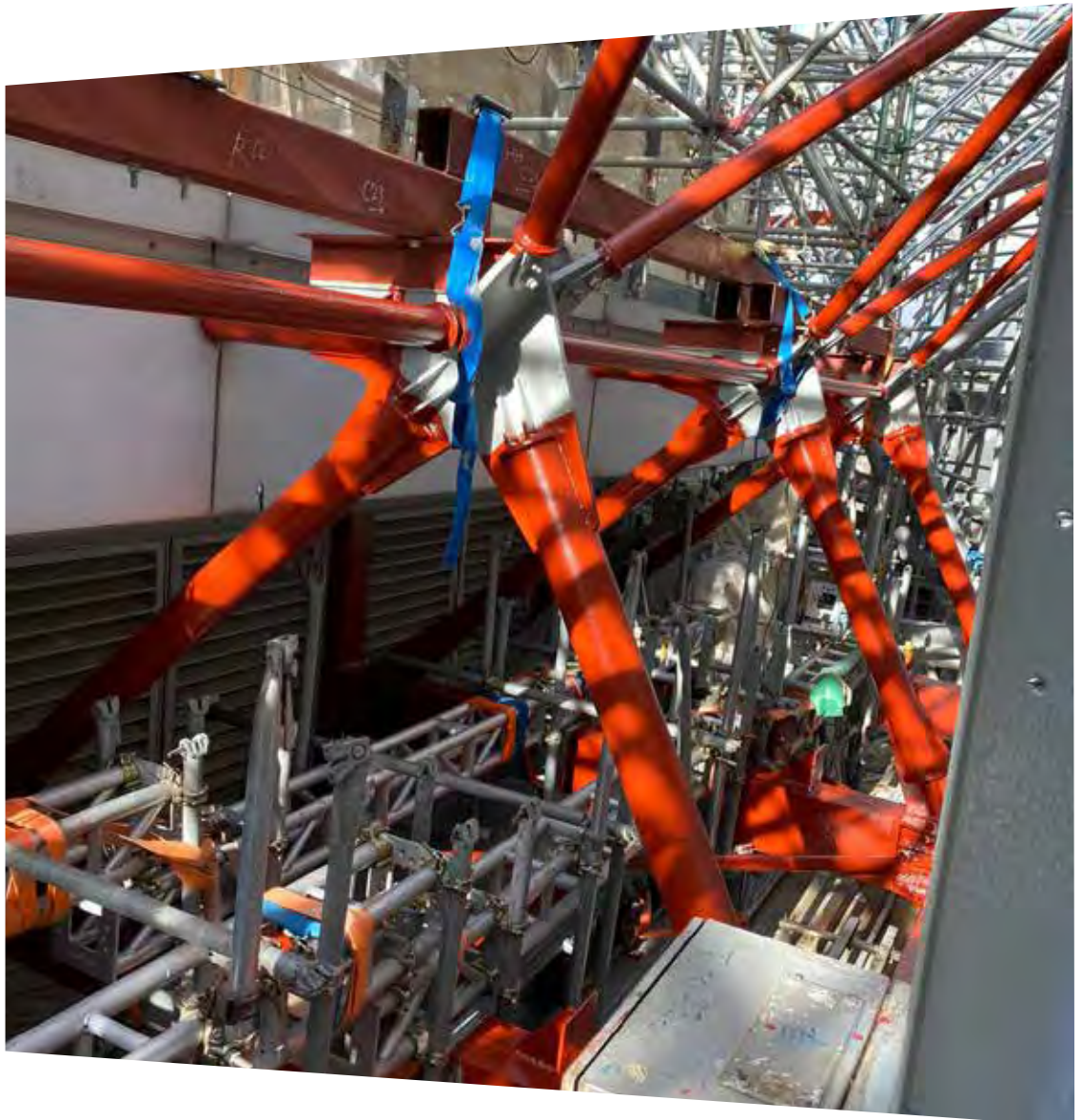
As the main contractor of the complex A&A and construction project, TCG was responsible for the extensive structural and engineering works to provide for LED wall signage replacement on the rooftop, all within the confines of the operational and tenanted commercial building.

Customer: HSBC

Location: Central

Programme duration: 9 months

Completion date: November 2021



Retail

Modern retail environments demand flexibility. Changing consumer habits are driving a need for truly omni-channel shopping experiences, and the traditional shop is being transformed from a purely transactional environment to a showcase for brands.

At TCG, our retail experts understand the changing nature of the industry and work closely with retailers to deliver shopping and hospitality environments that build brand loyalty and make meaningful connections to shoppers.

We have a broad portfolio of clients and projects across the retail sector and we are trusted to deliver for our customers' time and time again. With a portfolio of work that spans food retail, high-street bank branches, fashion boutiques, luxury stores and shopping centres, TCG delivers fast-track programmes that meet our clients' demands for increasingly competitive returns on project roll-out and investment.

From the fit out of single concessions in live and complex environments to the construction of entire shopping centres and retail parks, we bring our highly specialised retail knowledge and expertise to all aspects of the shopping environment.

In Hong Kong, TCG has managed the construction and fit out of flagship stores for the likes of Dior, Hackett, Louis Vuitton, La Mer, Victoria's Secret, Apple, Abercrombie & Fitch and also Lululemon. We understand that the environments your customers shop in need to display the same attention to detail, innovative design and exquisite finish that is evident in the products that underpin your brand.





La Mer Shatin, Hong Kong

Abercrombie & Fitch

TCG has delivered the fit out of the first prototype store for Abercrombie & Fitch in Asia, following the launch of the new concept in the United States. Situated in Harbour City, the 6,800 sq ft store marked the retailer's new look globally, making a fresh return to the Hong Kong market in 2018. The fit out included the installation of omni-channel technology and special features such as dimmable LED lighting, music control and phone charging docks within its fitting rooms. Another noteworthy installation is the storefront signage, featuring intricate details of the A&F logo – which was designed and fabricated directly from the United States. Prior to this project, TCG also delivered the retailer's first flagship store in 2012, situated in Pedder Street, spanning 30,000 sq ft.

Customer: Abercrombie & Fitch

Location: Tsim Sha Tsui

Size: 6,800 sq ft

Duration: 16 weeks

Completion date: December 2017

Taking Abercrombie
& Fitch's new concept
store to Asia







Hackett

This was Hackett's first store in China and Hong Kong. Hackett provided the concept design for both the internal fit out as well as the façade works. The project was a 5,000 sq ft retail project and a façade comprising of LED display panels with aluminium backlit panels. The project was owned by two parties – Hackett and Paragon. To have a clearer understanding of the design and customer's expectations, TCG visited several Hackett stores in London. We overcame the challenges of public restrictions during the façade works and working with a busy, overseas designer to deliver a

Customer: Hackett

Location: Causeway Bay

Area: 5,000 sq ft (fit out); 2,600 sq ft (façade)

Duration: 24 weeks

Completion date: November 2012



Around the world with Hackett



La Mer

The Estée Lauder Group contracted TCG to assist them in expanding the footprint of La Mer, one of their many prestigious brands, with the fit out of a second concept store in Hong Kong. La Mer is an iconic skincare brand which produces luxurious beauty products. The design of the new store - located in New Town Plaza, Sha Tin - reflects La Mer's status as a deluxe brand with a high-end, luxury interior. A fish tank was installed as the centrepiece of the store, in homage to the brand slogan: 'From Sea To Skin, A Daily

Customer: Estée Lauder Group, La Mer

Location: Sha Tin

Area: 6,200 sq ft

Duration: 4 weeks

Completion date: July 2016

Supporting
La Mer's business
expansion



Royal salon in world-class theme park

TCG was appointed as the main contractor to deliver fit out works across a 3,000 sq ft royal-styled salon for a world-class theme park, which comprised a gift shop selling princess costume and accessories, a spacious make-up room, fitting rooms and a studio for capturing enchanting moments of the princesses.

The complex and intricate project required high level of design, stakeholder, supply chain and project management to ensure the delivery quality meet the customer's high standard and it could be completed on a challenging timescale. TCG was able to deliver the project on time and on budget.

Customer: Confidential

Location: Lantau Island

Area: 3,000 sq ft

Duration: 56 weeks

Completion date: June 2019

TCG's third project
delivered for the
longstanding customer



lululemon

lululemon, a Canadian yoga-inspired athletic apparel retailer, engaged TCG to deliver a full refurbishment of its 1,600 sq ft retail store in ifc mall located in Central, Hong Kong. Completed in 16 weeks, this retail project saw TCG providing design, supply and installation services for the expanded boutique, and featured the brand's traditional minimalist interior design with lululemon quotes adorning the walls. This marked TCG's fifth project for the retailer.

Customer: lululemon

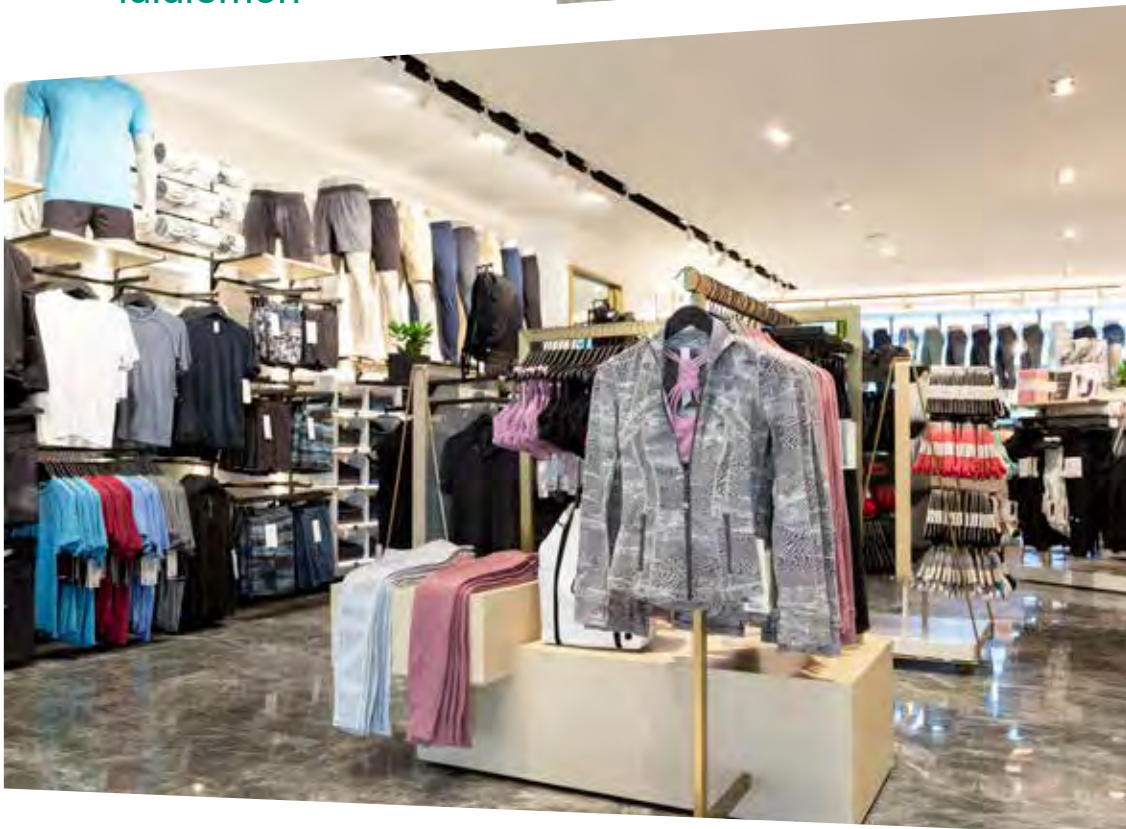
Location: Central

Area: 1,600 sq ft

Duration: 16 weeks

Completion date: July 2018

The partner
of choice for
lululemon





lululemon





Hospitality, leisure and living

Quality of construction is immensely important in creating hospitality, leisure and living environments that stand out in today's competitive marketplace.

We have worked alongside some of the world's most recognisable brands to create inviting and memorable destinations that create loyal customers, become highly regarded destinations, and help put cities on the map.

Our work — which includes hotels, exclusive members clubs, fine dining restaurants, airport lounges — stands out for the quality of our experienced, highly specialised and knowledgeable staff, who work within our dynamic culture to produce smarter, more innovative, and faster solutions.

We demonstrate a deep understanding of the industry. We work collaboratively with our supply chain, customers and consultants to deliver places that stand up to the test of time.

Our hospitality portfolio ranges from private boutique establishments through to international hotel chains, encompassing both new and existing premises as well as listed buildings. This gives us the opportunity to showcase our full range of capabilities including refurbishment and fit out, through to full mechanical and electrical installations and infrastructure upgrades.

Confidential hotel customer

For this world-class destination, our team delivered the fit out and refurbishment of guest areas spanning 42,000 sq ft. The scheme included a newly renovated atrium, main concierge, retail shop, club house, dining areas, guest restrooms, lift lobbies and hotel corridors. The expressive and unique design called upon a great deal of coordination with external consultants, series of mock-up reviews, factory visits, redevelopment of design and an extensive amount of high-end finishes combining millworks, stone works, metal balustrade, GRP/GRG cladding, themed painting and highly detailed design features. This project marks the third appointment by the iconic hospitality brand.

Customer: Confidential client

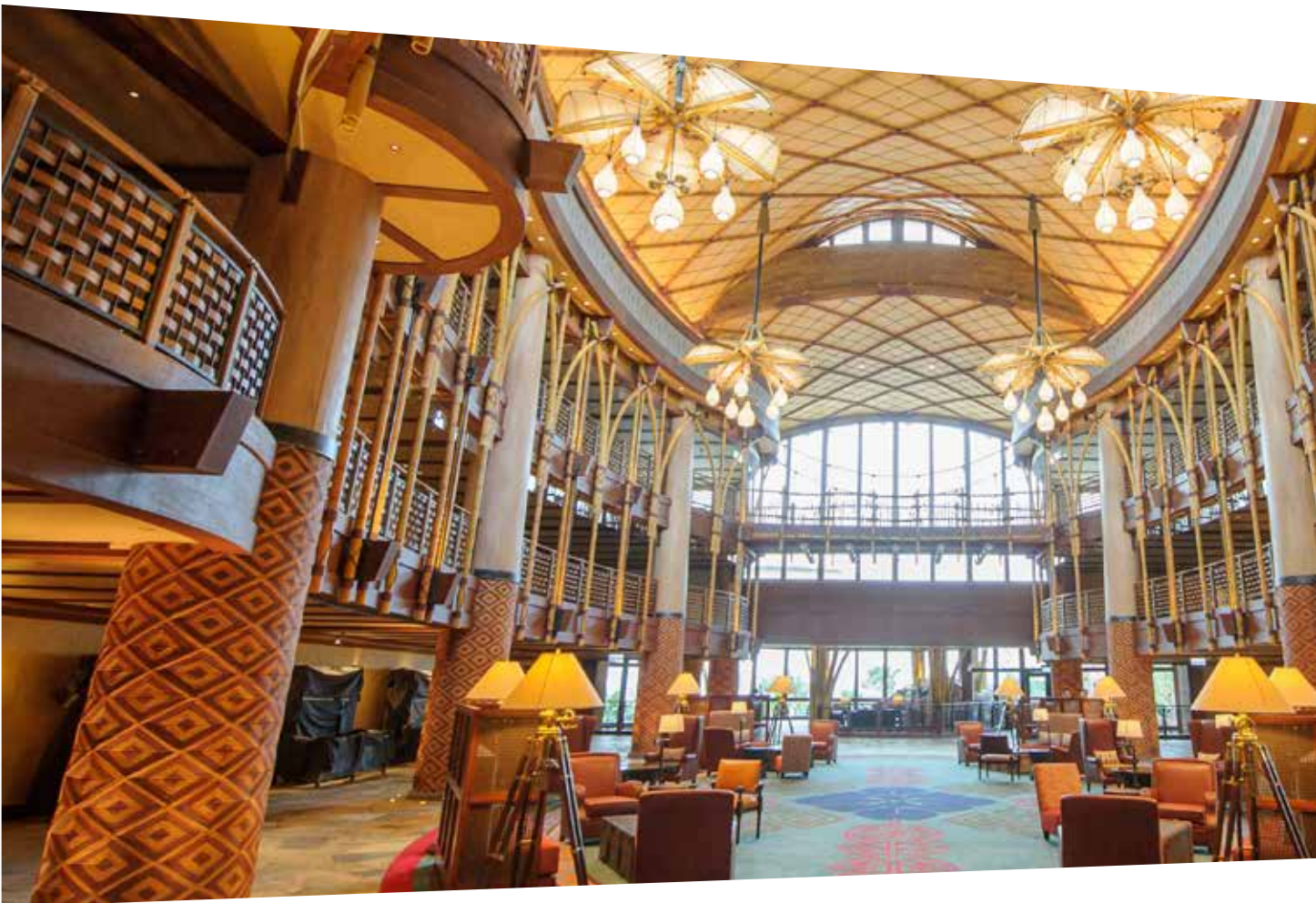
Location: Confidential

Area: 42,000 sq ft

Programme duration: 56 weeks

Completion date: March 2017

Delivering for a
world-class destination
in Hong Kong



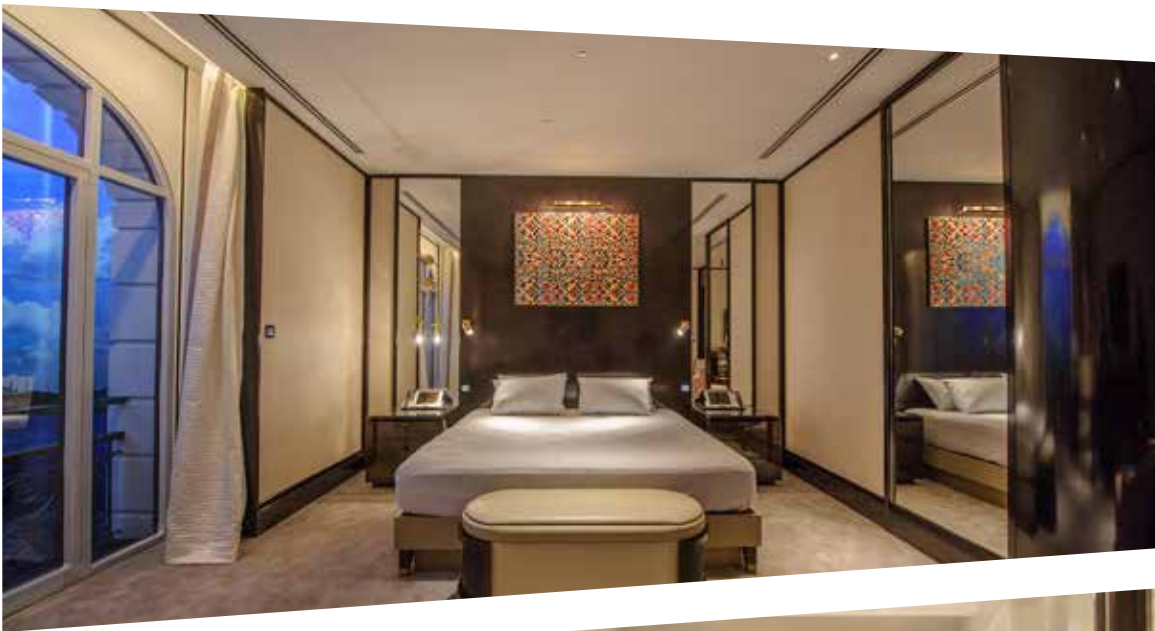


The Peninsula Hotels

TCG delivered mock-up rooms for two five-star luxury hotels – Peninsula London and Peninsula Istanbul prior to the build process of the hotel developments. Engaged by the owner, Hong Kong and Shanghai Hotels, TCG delivered three guestrooms in total, to help clients and guests visualise the new hospitality experience. The scope of works included construction works for the building envelope, interior fit out and MEP works to provide for lighting, air-conditioning and plumbing installations for the guestrooms. The model rooms delivered were fully-functioned model guest rooms and were made available for trial runs conducted by our customer's top management team by staying overnight for their personal experience and review.

Customer: Peninsula London Hotel Management Services Ltd
Location: Kwai Chung
Size: 1,400 sq ft and 1,800 sq ft
Programme duration: 16 weeks
Completion dates: March 2016

Translating vision
into mock-up
model rooms



Private member's club for NGO

TCG was appointed by a non-governmental organisation to fit out a private member's club that offered fine dining facilities. The project involved work in a live environment and to a tight deadline. We built three toilets, converted a library into a restaurant and kitchen area, and delivered a cantilever steel bridge to connect two buildings. Due to the complexity in the infrastructure of the bridge, TCG worked closely with the structural engineer to follow a precise installation sequence. New toilets were required, which was operational during the construction period. TCG had to strategically plan the works and maintain communication with the club operator in order to avoid disturbances.

Customer: Confidential

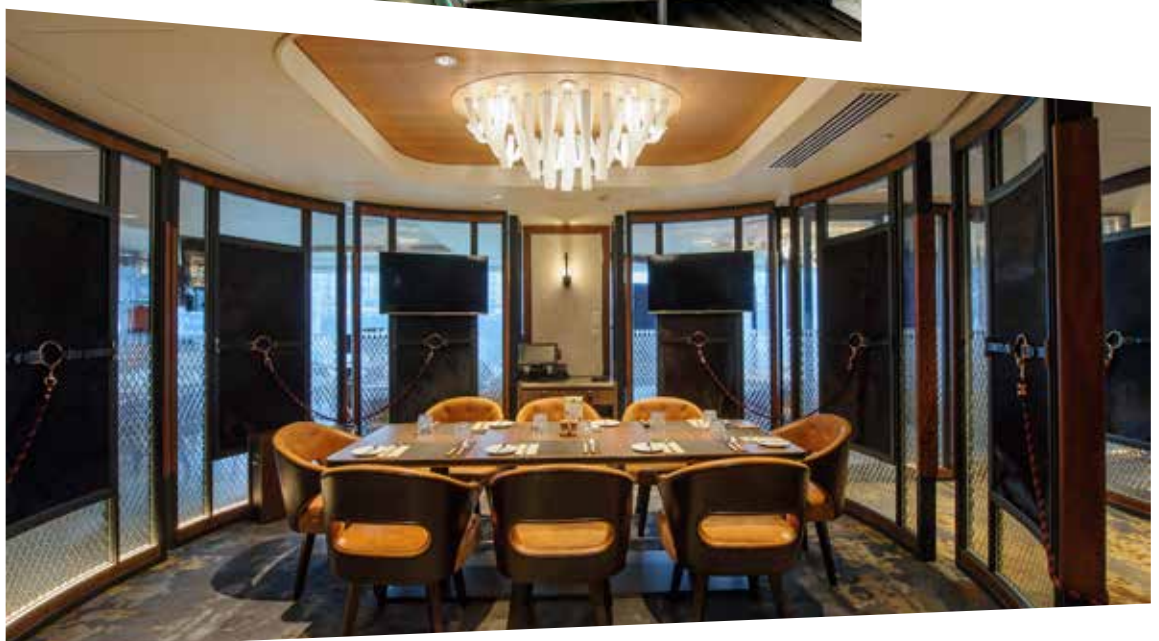
Location: Confidential

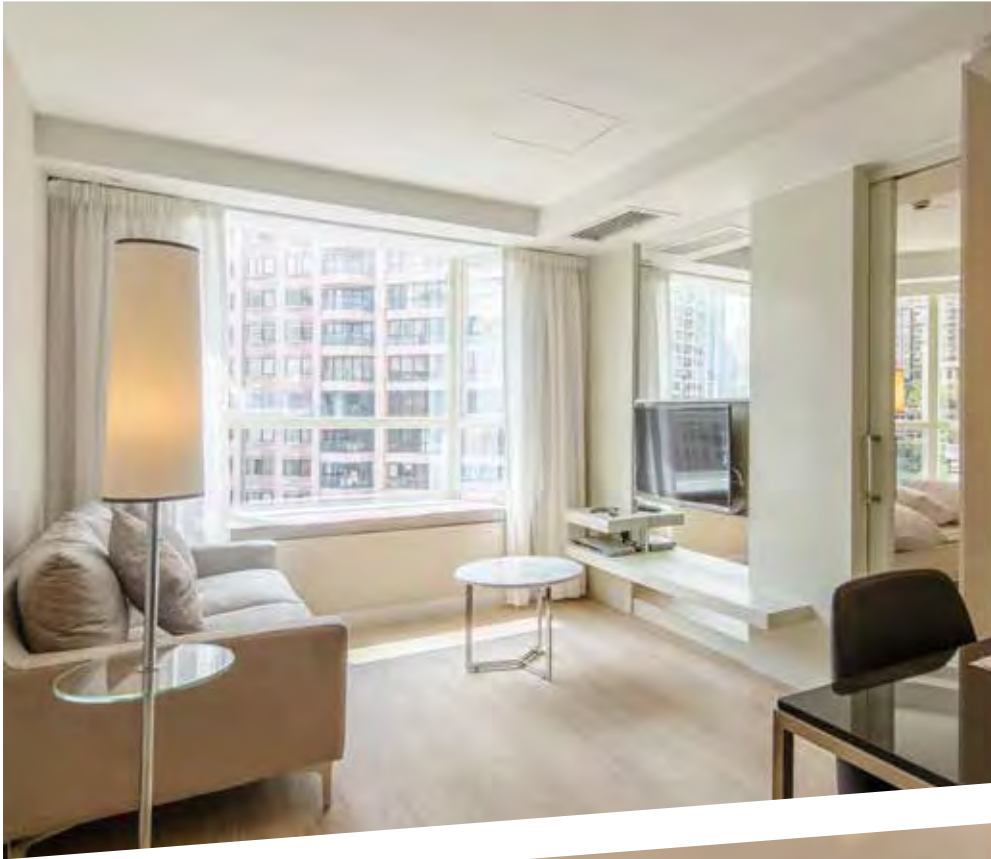
Area: 98,000 sq ft

Programme duration: 26 weeks

Completion date: December 2016

Major renovation and
complex structural
works





Embarking on restoration programme for luxury living

Two Macdonnell Road

TCG was the main contractor responsible for the renovation works to the guestrooms for a serviced apartment building known as Two Macdonnell Road, located in the Mid-Levels district of Hong Kong. The refurbishment work helped to bring the guestrooms in line with modern living standards. TCG also carried out renovation work to the public areas, fit out of new amenities such as an all-day dining and bar, business centre, gymnasium, concierge and lounge areas including the reception, and bar area. Two Macdonnell Road is located close to the Central district of Hong Kong, as well as the entertainment hubs of Lan Kwai Fong and Soho.

Customer: HKSJ Holdings Limited

Location: Mid-Levels

Area: 98,700 sq ft

Programme duration: 46 weeks

Completion date: June 2018



The American Club Hong Kong

TCG was appointed to deliver alteration and addition (A&A) works to renew the American Club and enhance its facilities over a project duration of nine months. For this project, TCG delivered a comprehensive scope of works across 7,000 sq ft of facilities, such as the addition of superstructures for an open space bar and installation of a new filtration system in an infinity plunge pool. The scheme also included upgrades to its two squash courts - while one court was given a complete renewal, the other was converted into two multifunctional high-tech golf simulators and a self-serve bar. Beyond that, the fan coil system in the court was replaced with air handling units.

Customer: The American Club Hong Kong

Location: Tai Tam

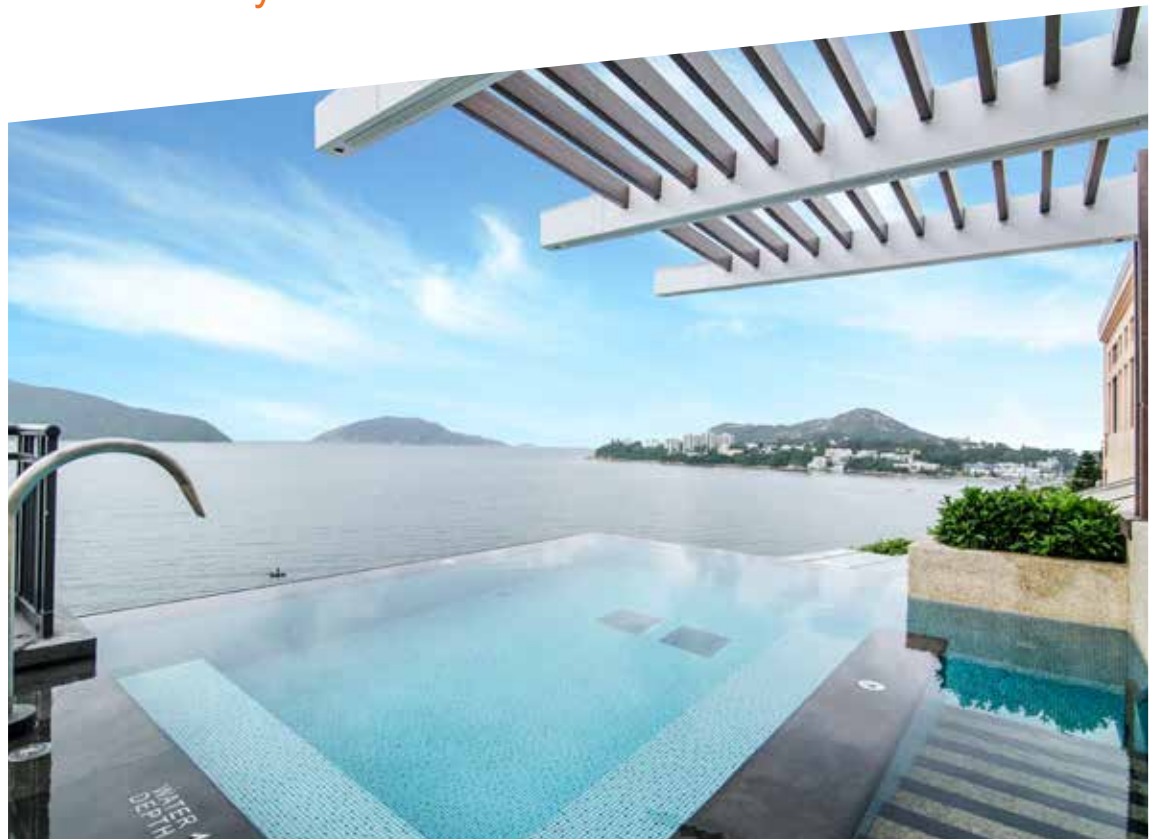
Area: 7,000 sq ft

Programme duration: 9 months

Completion date: September 2018



Revitalising a private club with over 30 years of history



Yan Toh Heen restaurant

TCG was appointed to deliver alterations and additions (A&A), mechanical, electrical, and plumbing (MEP) and fit out works across a 10,290 sq ft area in the restaurant, including the main kitchen and private dining rooms. Detailed project scope includes A&A works involving submission to Buildings Department, preparation and follow-up actions before and after statutory inspections; MEP works including diversion and renewal of the existing provisions; furniture, fixtures, and equipment (FF&E) and top-notch fit out of the restaurant. The project was completed in July 2018 over a project period of four months, with high satisfaction by the customer.

Customer: InterContinental Hong Kong

Location: Tsim Sha Tsui

Area: 10,290 sq ft

Programme duration: 4 months

Completion date: July 2018



Two-Michelin-starred
Chinese restaurant



World-class theme park

TCG was appointed by the world's leading entertainment conglomerate to deliver new attractions within the theme park as part of its multi-year expansion. The last phase involved excavation and structural works, refurbishment, alterations and additions works for 25,000 sq ft of space, including the installation of 4,000 sq ft of new façades and the fit out of public areas and restrooms. TCG also delivered landscaped areas spanning 10,000 sq ft, and installed new mechanical, electrical and plumbing services throughout the entire attraction.

Customer: Confidential

Location: Lantau Island

Size: 35,000 sq ft

Programme duration: 18 months

Completion dates: January 2019

Bringing new
excitement to
the visitors





Technology, science and health

Around the world, data, science and health facilities are under growing pressure to keep pace with rapidly evolving systems and ever-changing technology. In addition, the organisations responsible for these facilities often have a large and diverse set of stakeholders, which contributes to a significant level of scrutiny, responsibility and accountability.

At TCG, our highly-specialised delivery teams across the technology, science and health sectors are well-versed in these industry forces and work closely with our customers to reduce risk, deliver exceptional quality and build in agility.

Whether we are at work on a datacentre or a research and development environment, a manufacturing and distribution centre or a media and broadcasting facility, we bring the right skills to the table at the right stage of the process. As a result, we are able to

deliver highly complex projects that enable our clients to focus on their own work: developing, researching, collaborating, providing and protecting critical services and products for people and businesses locally and around the world.

We have teams of highly engineered, mission-critical, tech-led specialists in Hong Kong and beyond.

Commtech Asia is part of TCG and provides independent commissioning management and associated services to all industries reliant on mechanical and electrical building services systems for business operations.

Racing laboratory for non-governmental organisation

TCG converted an office space to one of the world's widely-known drug-testing laboratory in Hong Kong. The new facility saw us deliver fit out and specialist works within a highly controlled environment spanning 14,000 sq ft. Our team saw the delivery of a special facilities such as the cleanroom lab, specimen room, special gas supply and three units of concrete dog houses. The works also involved structural strengthening and the installation of new electrical and mechanical services on the roof top which involved precise measurement for rain protection during slab opening. During construction and demolition, our team closely monitored the vibration, cleanliness and impact due to the sensitivity of the work environment. Despite the really tight schedule due to noisy work hours and race days, our team completed the world-class facility to exceptional standards.

Customer: Confidential

Location: Sha Tin

Area: 15,000 sq ft

Programme duration: 36 weeks

Completion date: November 2016



Specialist fit out
for drug-testing
laboratory

Jockey Club Chinese Medicine Dispensary

TCG was engaged to deliver a live refurbishment of chinese medicine dispensary and pharmacy within a teaching and research facility. The scope of works involved a huge amount of customised joineries for the traditional chinese herb cabinets, dispensing tables and counters and the expansion of the main reception table. The facility also required improvement to the ventilation system and full replacement of air-conditioning system in the chinese medicine dispensary area.

Customer: Tung Wah Group of Hospitals

Location: Sheung Wan

Area: 2,000 sq ft

Programme duration: 8 weeks

Completion date: December 2012

Chinese medicine
dispensary
gets new look



Tseung Kwan O datacentre

Within Tseung Kwan O datacentre, TCG fitted out two new data halls spanning 20,000 sq ft including the installation of raised floor system. Apart from the fit out delivery, TCG also supplied and installed over 300 tonnes of structural steel on the rooftop to support the critical plant infrastructure of Digital Savvis HKG10 expansion project. Special considerations and detailed logistic planning were required, especially for the delivery of steel structures to the rooftop and within a live data center environment.

Customer: BYME Engineering Limited

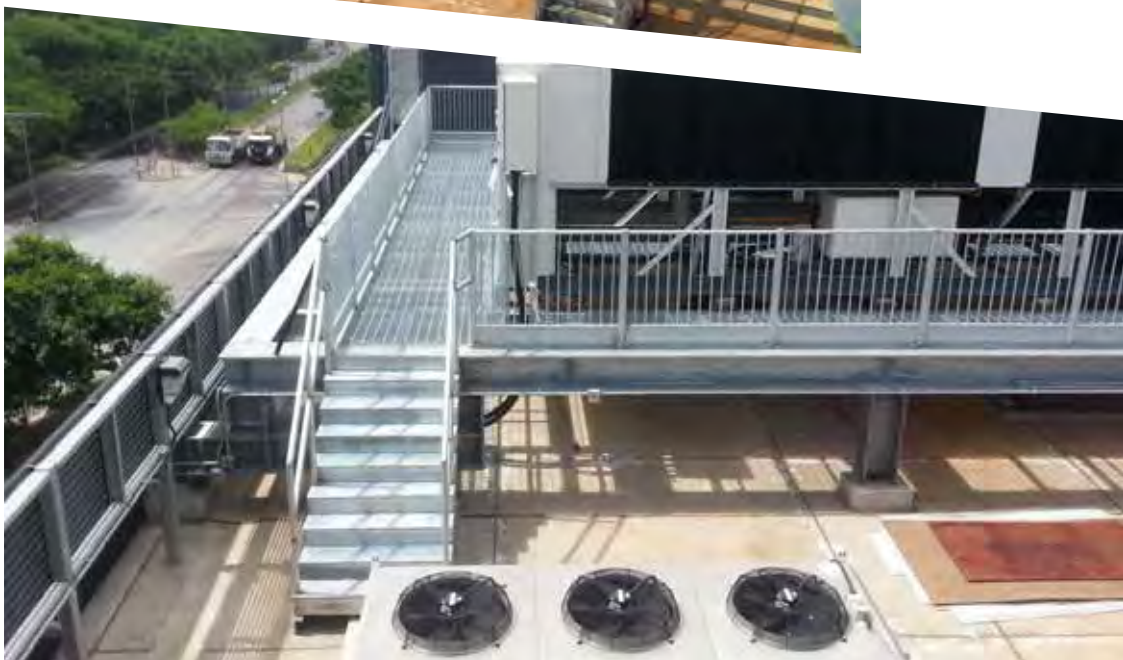
Location: Tseung Kwan O

Size: 20,000 sq ft (fit out)

Programme duration: 26 weeks

Completion date: September 2014

300 tonnes of steel to
the rooftop



Biological research facility for world-class university

Customer: Confidential

Location: Confidential

Area: 27,000 sq ft

Programme duration: 25 months

Completion date: May 2020

TCG successfully delivered an expanded and remodelled biological research facility for a leading university over a project period of 25 months. The highly technical scheme involved a significant volume of MEP, A&A, technical fit out and structural works to enhance the operational standards of the laboratory and associated facilities.

Delivered in two phases, the completion of a new plant room in an open space on level eight, a highly sanitised laboratory at Zone L on level seven of the Academic Building, a new building at Zone LB and modification of the existing Zone H on level seven demonstrated TCG's capability to deliver such a highly critical facility with high client's requirements to achieve international laboratory standards.

A highly technical and complex scheme with zero accident recorded



Government, public sector and education

Our government, public sector and education sector programmes and projects benefit from our broad insights and experience for what makes best practice from across the public and private sectors. Balancing efficiency with quality requires a clear understanding of the unique needs of our customers, other stakeholders and the end users.

At TCG we have worked alongside public sector organisations to deliver schools and other public buildings from the community liaison and events stage through construction delivery.

Our extensive experience delivering public sector projects means we bring a rare perspective to these works. We see ourselves not just as builders, but also as enablers of the important activities undertaken by educators, civil servants and students every day. We take our role in creating safe, high-quality environments very seriously. As a result, we emphasise collaboration and shared goals throughout the construction process with the intent of helping public agencies meet both current and future needs.

We have a strong track record of delivering a wide-range of environments in the sector, and we make sure to put effectiveness, efficiency and value for money at the heart of our delivery strategy. We strive to work collaboratively with our customers, helping them realise a more intelligent use of their space and making their capital investment go even further.





Carmel & Kellet School

TCG delivered the upgrade and refurbishment of a shared campus for Carmel & Kellett Schools. The existing building had been abandoned for approximately seven years prior to commencement of refurbishment, therefore requiring a total replacement of windows, building services, structural repairs, and outdoor sports ground reconstruction as well as converting the hall into a gymnasium and 500-seat auditorium. The school consists of 50,000 sq ft floor area across six floors, with facilities such as laboratories, design & technology classrooms, libraries, music room, caretaker's facilities and an auditorium.

Customer: Carmel & Kellett Schools

Location: Shau Kei Wan

Area: 50,000 sq ft

Programme duration: 16 weeks

Completion date: September 2009



Delivering campus expansion
in 16 weeks



Run Run Shaw Library

The Run Run Shaw Library is situated within the City University of Hong Kong in Kowloon. Our team fitted out the 22,000 sq ft library which included an exhibition area, learning and study zones, open learning hubs, an interactive learning zone and experiential design areas such as An-Chi Bridge's and the "Egg" which is a small theatre for small group presentations. Despite the intensity of the programme and design changes which were requested by the client during construction stage, TCG managed through the implementation of the change management process to guarantee the client's programme expectations were fulfilled.

Customer: City University of Hong Kong

Location: Kowloon

Area: 22,000 sq ft

Programme duration: 16 weeks

Completion date: August 2009



New environment
to inspire and
educate





If you are looking for a construction services company who have the right experts, knowledge and understanding to match your project requirements, contact our team in Hong Kong.

hongkong@tcgconstruction.com



Contact us

7/F, Olympia Plaza
255 King's Road
North Point, Hong Kong
+852 2815 7338
hongkong@tcgconstruction.com
www.tcgconstruction.com

Version: 12/2021

